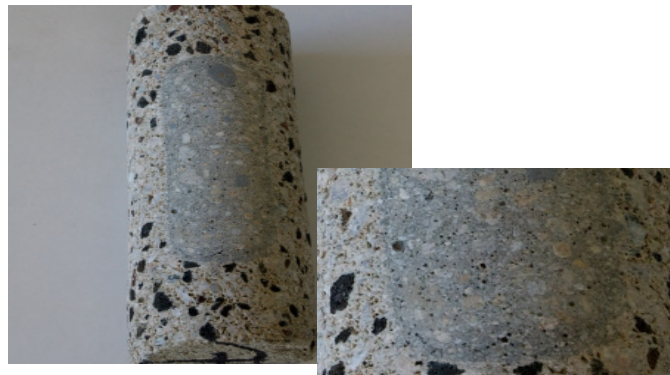


## PRODUCT

### R-Grout Aid GA213

## DISTRIBUTED BY

ORCO Blended Products  
27347 3<sup>RD</sup> St. Highland, CA 92346  
877-838-6726 Fax 909-862-2490  
www.orco.com



Core sample of GA213 showing superior bond and non-shrink properties

## DESCRIPTION

R-Grout Aid is a powder admixture for concrete used in grouting of concrete block and clay brick. It is recommended in hi-lift grouting applications. It improves the placing properties and the bond between grout and masonry unit. R-Grout Aid has greater pumping properties, higher compressive strengths, better flow, less segregation and higher shear bond strength. It will produce slight retardation, expansion and water reduction. Contains no chlorides or other chemicals, which contribute to corrosion of reinforcing steel.

## USES

Additive for course and fine grout used in hi-lift grouting applications of concrete block or clay brick. Grouting of concrete block or clay brick.

## ADVANTAGES

- Recommended for hi-lift grouting
- Higher bond and comprehensive strength
- Improved pumping properties
- Less segregation
- Increased yield
- Easier compaction
- Cost effective

## PACKAGING

Available in 13 lb. moisture resistant bags. **Shelf Life:** When stored in a cool dry area, is approximately one year. For maximum shelf life avoid moisture and high humidity.

## LIMITATIONS

- Grout must be used within 1 ½ hours.
- Consult an R-Crete representative prior to use in applications other than grout for masonry units.
- Ready mix supplier must be notified of the job site addition to avoid overdosing.
- **DO NOT OVERDOSE.** may cause high expansion and increased air content.
- Grout shall not contain lime, this may cause excessive air.

## TECHNICAL DATA

GA213 R-Grout Aid is approved by the City of Los Angeles RR 25454. It has been approved by the state of California DSA PA125 since 2001 and meets current requirements for DSA California state projects. Grout mix design should be a minimum of 6 sacks of cement, 60-70% washed concrete sand and 30-40% 3/8" aggregate per cu. yd. Fine grout mixes are recommend at a maximum of 3:1 sand to cement ratio. Grout ingredients shall conform to IBC and ASTM standards. The ready mix supplier must be notified of the addition of Grout Aid to avoid overdosing the concrete.

## INSTALLATION

**Dosage:** R-Crete GA213 is added at the rate of ¼% (.25%) of the total cement content. Typically one 13 lb. bag per 9-10 cu. yd. truck. R-Grout Aid is added to the ready mix truck at the job site. It may also be pre-blended with dry blend concrete and grout mixes. Grout should be ordered from the ready mix plant at an 8" slump. GA-213 will increase slump to 10-11. Extended slump life is approximately 30-40 minutes. Batches should be placed within 1 hour so that as much of the expansion action occurs after the grout is placed. (Add slowly for proper mixing).

## AVAILABILITY / TECHNICAL SERVICES

Contact ORCO Blended Products for dealers in your area and technical services at 877-838-6726.

## CAUTION

R-Grout Aid contains aluminum materials. Prolonged exposure to dust may cause delayed lung disease. Eliminate exposure to dust. Use NIOSH approved mask for silica dust. Freshly mixed materials may cause skin irritation. Avoid direct contact where possible and wash exposed skin areas promptly. If any cementitious materials gets into the eyes, rinse immediately and repeatedly with water and get prompt medical attention. See SDS. Conform to UBC and ASTM standards. The ready mix supplier must be notified of the addition of Grout Aid to avoid overdosing the concrete.

## WARRANTY

The technical information and usage statements are based on our best knowledge. The contents of this specification sheet are presented for informational purposes only and do not constitute responsibility for their use. The manufacturer will replace only that material which is proven defective due to quality of the components or the manufacturing process.