

Type S & M Lime Alternate Mortars for Block, Brick and Stone

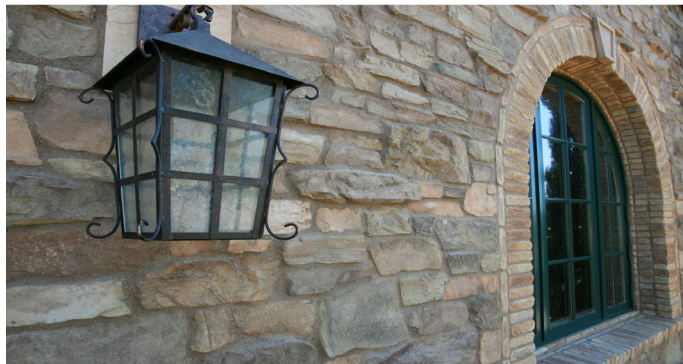
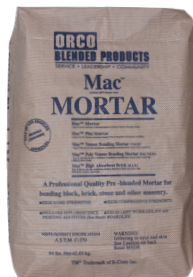
DS.MAC. 061620

PRODUCT

Mac Mortar	<input type="checkbox"/>
Mac-Plus	<input type="checkbox"/>
Mac-Plus Premium	<input type="checkbox"/>
Mac-HAB	<input type="checkbox"/>
TYPE S <input type="checkbox"/>	TYPE M <input type="checkbox"/>

MANUFACTURER

ORCO Blended Products
27347 3RD St. Highland, CA 92346
877-838-6726 Fax 909-862-2490
www.orco.com



DESCRIPTION

Mac Mortars are dry, factory blended masonry mortars meeting ASTM C-270. Mac Mortars are designed for installation of concrete block, clay brick, stone and similar masonry products. They are ideal as a joint grout / pointing mortar. All Mac Mortars include efflorescence reducing additives with Mac-Plus and Mac Plus-Premium providing the greatest protection. All products provide great bond strengths, low shrinkage and excellent workability. Mac Mortars are available in a variety of packaging, color, and mix designs to meet individual job requirements.

Mac Mortar - Type S or M with moderate efflorescence protection.

Mac-Plus – Includes additional integral water repellent (IWR) and efflorescence control additives. Type S or M.

Mac-Plus Premium - Has high water repellent properties and additional dry latex polymer for improved flexural bond strength. Ideal for grouting pavers in heavy traffic applications. Type S or M.

Mac-HAB - Designed for installing high absorption brick, stone veneer and masonry units. The high water retention allows for improved working time and bond strength. Type S.

Colors

Mac Mortars may be ordered in standard colors and unlimited special order colors. The efflorescence control and water repellent properties help the long term appearance of colored mortar. For color consistency use the same water and tooling techniques. Color can vary dramatically, test installation techniques prior to application.

R-AcrylicAd - Replacing all or part of the mix water will increase chemical/stain resistance and increase flexural bond and impact resistance.

Efflorescence: Mac Mortars have proven experience reducing efflorescence, however, due to variables beyond our control, we cannot guarantee efflorescence will not occur.

USES

Mac Mortar is suitable wherever a high quality masonry mortar meeting ASTM C-270 is required. Ideal as a joint grout / pointing mortar for Installing brick, stone and other masonry products. See VBM-MAC Installation System.

ADVANTAGES

- Includes efflorescence reducing additives.
- High bond and compressive strengths.
- Excellent workability and board life.
- Lower shrinkage, high water retention.
- Convenient handling and transporting.
- Pre-blended color and uniformity.

PACKAGING

Mac Mortars are available in 50lb & 94lb. moisture resistant bags. Also 3000lb bulk. **SHELF LIFE:** When stored in a cool dry area, with low humidity, shelf life is approx. six months to one year.

COVERAGE

One 50 lb bag will install approximately 12 concrete block. Yield is approx. .4 Cu.Ft. per bag. One 94 lb bag will install 22 concrete block. Yield is approx. .73 Cu.Ft. per bag. Coverage can vary due to installation technique.

LIMITATIONS

- Do not apply when temperatures are below 40° F prior to cure.
- Proper methods and handling of test cylinders are important for job site testing.
- Do not add any admixtures without prior consent.
- Follow ASTM and ANSI guidelines for installation in high heat, cold or wind.
- Compressive strength cylinders must be air cured (ANSI 118.1).
- Color may change due to differing water content, weather, absorption, and tooling techniques.
- Do Not Over Mix (3-5 min). High air content will lower strength.

TECHNICAL DATA

Mac Mortars meet the property specifications of ASTM C-270 Type S (>1800 psi) and Type M (>2500 psi). The mortar consists of Portland Cement (ASTM C-150), Type S Lime (ASTM C-207), R-Mortar Aid and washed masonry sand (ASTM C-144). Mac-Plus includes J-4 R-Repel Aid integral water repellent. Compressive strength specimens must be air cured for 7 days prior to testing due to their high water retention and water repellency (per ANSI 118.1). Manufactured in accordance with ASTM C-1714 quality control standards. City of Los Angeles approval RR22454. Approved on DSA-State of California projects.

INSTALLATION

Add Mac Mortar to clean potable water and mix to the desired consistency. Recommended water is approximately 15-20% by weight. Mix per ASTM C-270 specifications (3-5 minutes). **Do Not Over Mix.** High air content will lower strength. Apply masonry units according to applicable building codes.

AVAILABILITY / TECHNICAL SERVICES

Contact ORCO Blended Products for dealers in your area and technical services at 877-838-6726.

CAUTION

Prolonged exposure to dust may cause delayed lung disease. Eliminate exposure to dust. Use NIOSH approved mask for silica dust. Freshly mixed materials may cause skin irritation. Avoid direct contact where possible and wash exposed skin areas promptly. If any cementitious materials get into the eyes, rinse immediately and repeatedly with water and get prompt medical attention. See SDS sheet. **Warning:** This product can expose you to Silica, crystalline (airborne particles or respirable size) which is known to the State of California to cause cancer. For more information go to www.p65Warnings.ca.gov.

WARRANTY

The technical information and usage statements are based on our best knowledge. The contents of this specification sheet are presented for informational purposes only and do not constitute responsibility for their use. The manufacturer will replace only that material which is proven defective due to quality of the components or the manufacturing process.

RELATED PRODUCTS

MAC Scratch & Brown - A high strength cement plaster.

VBM Mortars- Polymer modified, water repellent bonding mortars.

R-AcrylicAd- Acrylic mortar and grout additive.



UC Riverside - Mac-Plus for full brick installation.

PRODUCT DATA SHEETS ARE SUBJECT TO CHANGE WITHOUT NOTIFICATION. TEST RESULTS SHOWN ARE TYPICAL BUT FIELD PERFORMANCE WILL VARY DEPENDING ON INSTALLATION METHODS AND JOB CONDITIONS. *MAC AND VBM MORTARS ARE A TRADEMARK OF R-CRETE INC.