

AN EXTENSIVE SELECTION OF COLORS.

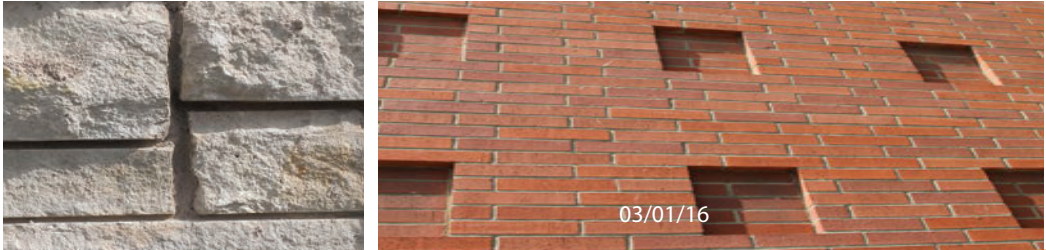
ORCO Blended Products [OBP] is the leading provider of pre-blended masonry mortars with color. We offer a broad selection of standard colors and special order colors to meet individual project requirements.



Glacier White

Don't see the color you need? All OBP mortars are available in colors to match your projects. We take pride in matching or designing colors for you.

NOTE: Sample colors shown above are approximate. Final installed shades can vary with the block, brick & stone variety and porosity, job site environment & finishing techniques. Variable drying conditions can cause uneven shading.



OBP SELECTIONS.

- Masonry Mortar Type S & M
- MAC Mortar Type S & M
- MAC Plus
- MAC Plus Premium
- MAC HAB
- VBM (Veneer Bonding Mortars)
- VBM Poly LFT, 300 & 500
- VBM Bonder (Polymer Modified Thin set)
- VBM Thin set Mortar & VBM Poly Thin set
- VP Joint Grout
- VP Joint Grout Premium
- Masonry Grout 70/30 & Fine Grout
- Concrete Mix 50/50
- Scratch & Brown
- Deck Mud
- Grout Aid
- Silica Sand
- Poly Mini Brick Mortar & Grout
- Type II/V Portland Cement
- Lehigh White Cement
- Poly Waterstop (Masonry Coating)
- R-Lastic (Elastomeric Waterproof Membrane)
- Poly Foam 2000

THE EFFLORESCENCE ADVANTAGE.

OBP provides the largest selection of pre-blended mortars, grouts and plasters with efflorescence reducing properties. Our water repellant mortars reduce the flow of water through the mortar, thus reducing efflorescence.



A VARIETY OF MORTARS.

Masonry Mortars | Type S & M

MAC Mortar is a preblended masonry mortar meeting ASTM C270 Type S or M property specifications. It's used for installing concrete block, clay brick, paver, stone, and other masonry units. MAC Mortar includes efflorescence reducing additives, has lower shrinkage, higher bond strengths, better boardlife and better sulfate resistance than other cement lime mortars. MAC Mortar is L.A. City approved and Cal State Architects office approval on numerous state projects. It is suitable for residential, commercial, industrial, and institutional projects. MAC Mortar or MAC Plus mortars are the recommended mortars for grouting stone or similar masonry veneers and pavers.

MAC Plus Mortar is a preblended mortar meeting ASTM C270 Type S or M property specifications. It contains additional water repellant polymers and has outstanding efflorescence reducing properties. The water repellant properties also help protect the masonry units and the long term appearance and durability of colored mortar. MAC Plus provides the same premium performance of MAC Mortar—high bond strength, better boardlife, low shrinkage and better sulfate resistance. The low shrinkage and water repellant/efflorescence reducing properties make it the recommended grouting mortar for stone, brick, pavers and similar masonry units.

MAC Plus-Premium contains additional polymers for higher flexural bond strengths. It is recommended for the highest traffic applications—such as grouting pavers for commercial driveways.

MAC-HAB is a preblended masonry mortar meeting ASTM C270 Type S property specifications. It is designed for installing high absorption brick and other masonry units. The higher water retention provides extra working and tooling time during installation but also significantly improves the bond strength and reduces shrinkage.

WATERPROOFING PRODUCTS.

R-Lastic | Water Based Elastomeric Coating

It is used primarily as a waterproof membrane over concrete and masonry but also meets the requirements of an anti fracture membrane and organic bonding adhesive. R-Lastic forms a waterproof membrane with exceptional bond strengths, tensile strength and elongation. It has exceptional bond to concrete, natural stone, masonry, wood and steel. Polymer modified mortars such as Poly VBM and VBM Bonder can be used to bond masonry or tile veneers and pavers to R-Lastic. R-Lastic meets all VOC requirements and is safe and easy to handle and apply.

OBP Poly Waterstop | Cement Coating

It is a one component and polymer modified coating designed to waterproof/damp proof concrete and masonry. It may be used above or below grade. OBP Poly Water Stop consists of polymer, cement, fine sand and other propriety chemicals. The waterproof additives are cross linked with the polymer providing long-term performance. OBP Poly Waterstop produces premium-waterproofing properties combined with the durability of a cement-sand coating. Poly Waterstop is available in gray, white and special order colors. The finish of the cured coating is a light texture.

Veneer And Paver | Bonding Mortars

VBM is a preblended veneer bonding mortar meeting ASTM C270 Type S property specifications. It is designed specifically for thick bed (>3/8") bonding of masonry veneers and pavers. Use with manufactured stone, natural stone, precast concrete, clay brick and similar masonry units on interior and exterior projects. VBM provides excellent working time, low shrinkage, non sag properties and moderate efflorescence reducing properties. VBM is our most economical high bond strength mortar but still provides excellent performance. It is suitable for residential, commercial and institutional projects. VBM also meets the shear bond requirements of ANSI 118.1*

VBM-Poly LFT, 300, 500 are pre-blended, polymer modified veneer bonding mortars meeting ASTM C270 Type S property specifications and the shear bond requirements of ANSI 118.4 – Latex Modified Cement Mortars. Poly VBM mortars include additional polymers for higher bond strengths and improved water repellent properties. Poly VBM 300 and 500 are highly water repellent and provide the greatest durability and efflorescence protection. Poly VBM 300 and 500 are the recommended mortars for heavy traffic and difficult bonding conditions. They are suitable for residential, commercial and institutional interior or exterior projects.

VBM Bonder is a polymer modified thin set bonding mortar meeting the shear bond properties of ANSI 118.4 – Latex Modified Portland Cement Mortars. VBM Bonder has good non-sag properties, high bond strengths and excellent water repellent properties. The high water repellent properties dramatically reduce the potential for

efflores-cence and improve durability of the installation and veneer. VBM Bonder is typically used for installation of all types of tile, thin brick, natural stone, manufactured stone, precast concrete and similar masonry veneers and pavers. It may be used on residential, commercial or institutional interior or exterior projects.

VBM Poly Thin Brick Mortar Factory blended polymer modified thinset mortar specifically designed for thin brick applications. It exceeds ANSI 118.4 – Latex Modified Portland Cement Mortar - bond strength requirements. It is designed specifically for thin brick, natural stone, tile, ceramic tile, precast concrete and similar veneers or pavers. VBM Poly Thin Brick Mortar offers excellent water resistance, high bond strengths, and excellent non-sag properties. The non-sag properties significantly improve installation productivity. Available in gray, white, soft white, brick red and special order colors.

Grouts And Base Mortars

VP Joint Grout and VP Joint Grout-Premium are pre-blended mortars designed to fill grout joints in a wide variety of tiles, thin brick, masonry veneers and paver applications. VP Joint Grout-Premium has additional polymer and water repellant properties. It is the recommended product for higher traffic and paver applications. The higher polymer content provides greater flexural strength, efflorescence protection, freeze thaw and long term color protection. Both products provide a grout joint with exceptional durability, stain resistance and color fast properties. VP Joint Grout is made with a fine silica sand (for joints with a course sand, use MAC, MAC Plus or MAC Plus Premium).



Poly Deck Mud and Deck Mud are dry, factory blended mortars designed to produce high strength thick mortar beds. OBP Poly Deck Mud has added polymers providing additional strength, water repellant properties and efflorescence protection for the most demanding applications. The water repellant properties can reduce or eliminate moisture migrating to the paver from the sub base. They are a blend of Portland Cement, washed masonry sand and proprietary admixtures.

MAC Scratch & Brown-Premium are pre-blended mortars for producing interior and exterior cement based plaster – stucco base coats. They have lower air content than plastic cement field mixes and thus produces a stronger base mortar. They are safer to handle than cement-lime mixes, have less shrinkage cracking and provide efflorescence reduction. MAC Scratch and Brown-Premium has added polymers for even greater flexural strength and water repellant properties. It is recommended as a strong base mortar under high bond strength mortars used when installing masonry veneers.